

1

2

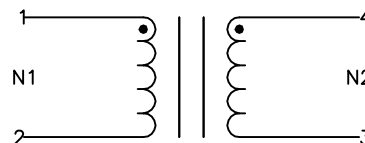
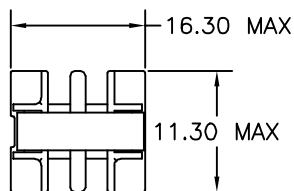
3

4

5

6

A

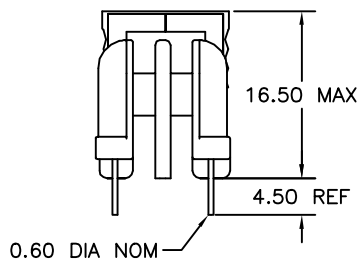


A

B

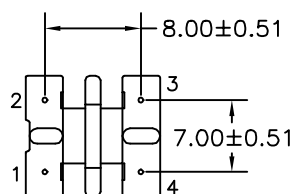
B

C



C

D



D

E

E

F

F

ELECTRICAL SPECIFICATIONS

L @ 10kHz .1V - (1-2) 30mH MIN

LL @ 100kHz 10mA - (1-2) 494μH MAX
(WITH 3&4 SHORTED)

CC @ 100kHz .1V - (1-4) 4.5pF MAX

TURNS RATIO - ±3%
N1:N2 - 1:1DCR - OHMS MAX
N1 - 3.59
N2 - 3.59HIPOT - 2500VAC 1MIN OR 3000VAC 1SEC
N1 TO N2

G

G

H

H

REVISION		DATE	MARKINGS	LOCATION
O	PRELIMINARY	05/21/03	544202300	TOP OF CLIP
A	RELEASED	08/24/05	DESCRIPTION 0.20 A 30 MILLIHENRY C.M. CHOKE	TOLERANCE UNLESS OTHERWISE SPECIFIED 2 PLACE DECIMALS ±.010 3 PLACE DECIMALS ±.005 FRACTIONS ±1/64 ANGLES ±1/2° PROPRIETARY INFORMATION PROPERTY OF CRAMER COIL & TRANSFORMER CO. DUPLICATION AND/OR DISTRIBUTION BY PERMISSION ONLY
B	CORRECTED HIPOT	10/04/06	CUSTOMER	
C	UPDATED ELECTRICALS	11/21/06		
D	ASSIGN LL, CC AND DCR TOLERANCES	01/24/07		
			G:\DATA\SPECS\ENG\CC\202-300	CUSTOMER PART NUMBER
			DR. MEC	DATE 05/21/03
			APPD. MJA	DATE 05/26/05
				CRAMER PART NUMBER CC 202-300
				REV D

J

J

1

2

3

4

5

6