

1

2

3

4

5

6

A

A

B

B

C

C

D

D

E

E

F

F

G

G

H

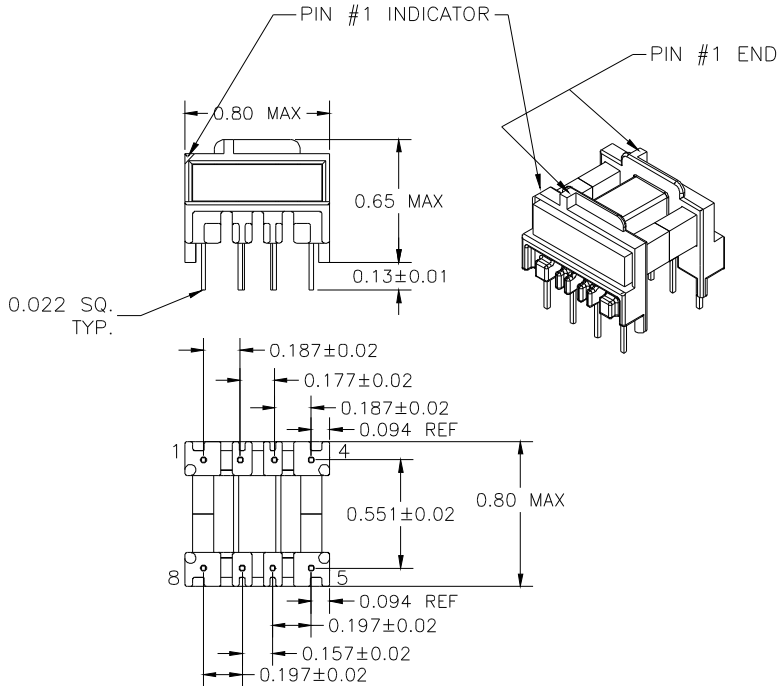
H

I

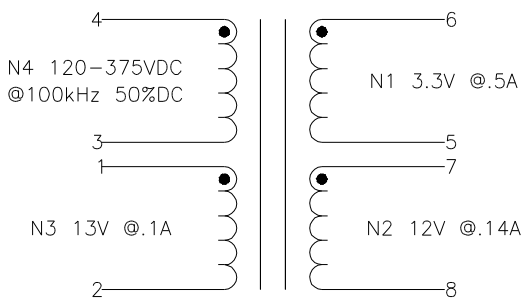
I

J

J



FOR USE WITH  
STMicroelectronics  
VIPer 20  
PRIMARY REGULATION



NOTE:  
POLARITY SHOWN IS THE TRANSFORMER.  
FOR CORRECT FLYBACK OPERATION  
CONNECT B+ TO PIN 3.

ELECTRICAL SPECIFICATIONS

L @ 1kHz .1V - (3-4) 2.8mH ±10  
 LL @ 100kHz .1V - (3-4) 38µH TYP, TOL TBD  
 (WITH 1,2,5-8 SHORTED)

URNS RATIO - ±3  
 3-4:1-2 - 1:0.114  
 3-4:5-6 - 1:0.03  
 3-4:8-7 - 1:0.108

DCR - OHMS TYP, TOL TBD  
 3-4 - 4.1  
 1-2 - 0.43  
 5-6 - 0.02  
 7-8 - 0.35

HIPOT - 5500VAC 1SEC  
 N1,N2 TO N3,N4

NOTE:  
MEETS CONSTRUCTION FOR:  
UL 1310, 1950, 1411  
IEC 61558-1, 2-17, EN60950

REVISION		DATE	MARKINGS	LOCATION
0	PRELIMINARY	12/15/99	CRAMER EIA DATE CODE CVP 10-007	PIN RAIL SIDE OF CORE
1	CHANGED PIN OUTS	02/22/00	DESCRIPTION	TOLERANCE UNLESS OTHERWISE SPECIFIED 2 PLACE DECIMALS ±.010 3 PLACE DECIMALS ±.005 FRACTIONS ±1/64 ANGLES ±1/2°
			CUSTOMER	PROPRIETARY INFORMATION PROPERTY OF CRAMER COIL & TRANSFORMER CO. DUPLICATION AND/OR DISTRIBUTION BY PERMISSION ONLY
			CRAMER STANDARD	
			G:\DATA\SPECS\ENG\CVP\10-007	
			DR. CAM	DATE 12/15/99
			APPD. JDB	DATE 12/15/99
			CUSTOMER PART NUMBER	
			REV	
			CRAMER PART NUMBER	
			REV	
			CVP 10-007	
			1	

1

2

3

4

5

6