

1

2

3

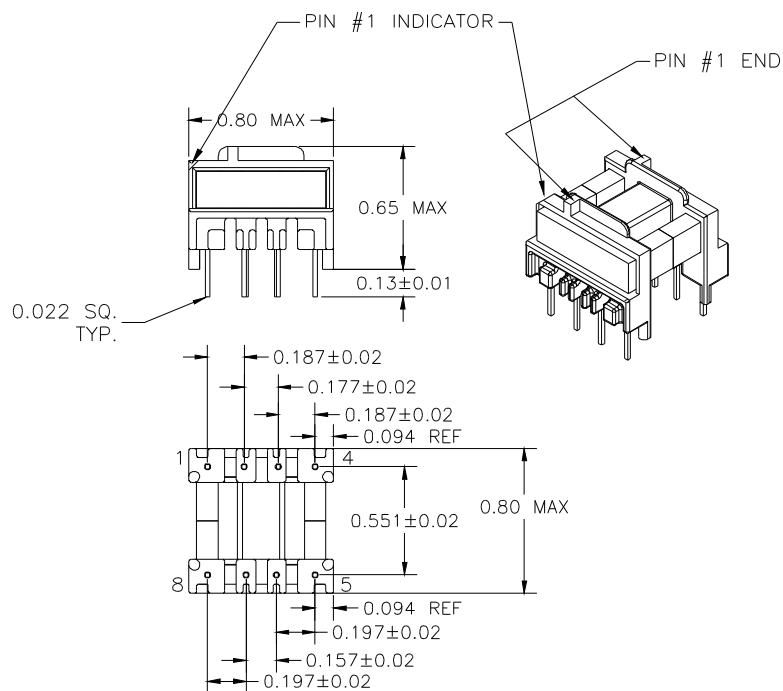
4

5

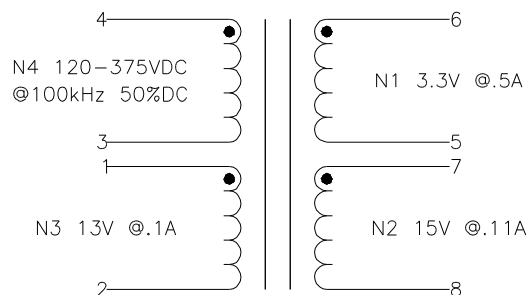
6

A

A



FOR USE WITH  
STMicroelectronics  
VIPer 20  
PRIMARY REGULATION



NOTE:  
POLARITY SHOWN IS THE TRANSFORMER.  
FOR CORRECT FLYBACK OPERATION  
CONNECT B+ TO PIN 3.

#### ELECTRICAL SPECIFICATIONS

L @ 1kHz .1V - (3-4) 2.8mH ±10

LL @ 100kHz .1V - (3-4) 31µH TYP, TOL TBD  
(WITH 1,2,5-8 SHORTED)

TURNS RATIO - ±3

3-4:1-2 - 1:0.114

3-4:5-6 - 1:0.030

3-4:8-7 - 1:0.132

DCR - OHMS TYP, TOL TBD

3-4 - 4.1

1-2 - 0.43

5-6 - 0.02

7-8 - 0.42

HIPOT - 5500VAC 1SEC

N1,N2 TO N3,N4

NOTE:  
MEETS CONSTRUCTION FOR:  
UL 1310, 1950, 1411  
IEC 61558-1, 2-17, EN60950

E

E

F

F

G

G

H

H

REVISION		DATE	MARKINGS	LOCATION
0	PRELIMINARY	12/15/99	CRAMER EIA DATE CODE CVP 10-008	PIN RAIL SIDE OF CORE
1	CHANGED PIN OUTS	02/22/00	DESCRIPTION 5 VA FLYBACK XFMR 3.3, 15	TOLERANCE UNLESS OTHERWISE SPECIFIED 2 PLACE DECIMALS ±.010 3 PLACE DECIMALS ±.005 FRACTIONS ±1/64 ANGLES ±1/2°
			CUSTOMER CRAMER STANDARD	PROPRIETARY INFORMATION PROPERTY OF CRAMER COIL & TRANSFORMER CO. DUPLICATION AND/OR DISTRIBUTION BY PERMISSION ONLY
			G:\DATA\SPCS\ENG\CVP\10-008	CUSTOMER PART NUMBER
			DR. MEC	DATE 12/15/99
			APPD. JDB	DATE 12/15/99
				CRAMER PART NUMBER CVP 10-008
				REV 1

I

I

J

J

1

2

3

4

5

6