

1

2

3

4

5

6

A

A

B

B

C

C

D

D

E

E

F

F

G

G

H

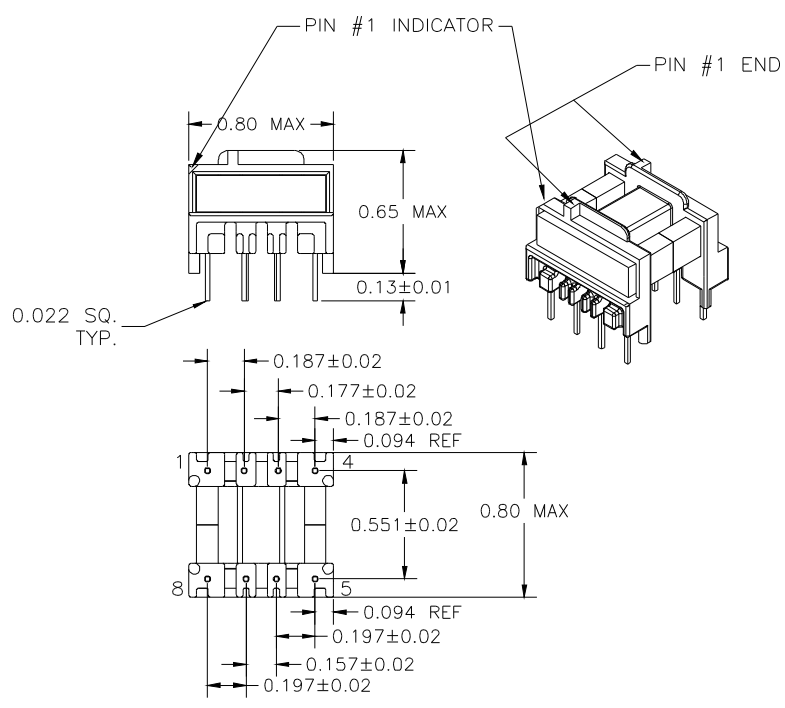
H

I

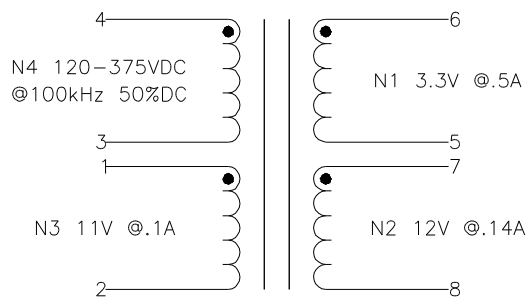
I

J

J



FOR USE WITH
STMicroelectronics
VIPer 20
SECONDARY REGULATION



NOTE:
POLARITY SHOWN IS THE TRANSFORMER.
FOR CORRECT FLYBACK OPERATION
CONNECT B+ TO PIN 3.

ELECTRICAL SPECIFICATIONS

- L @ 1kHz .1V - (3-4) 2.8mH ±10
- LL @ 100kHz .1V - (3-4) 38µH TYP, TOL TBD
(WITH 1,2,5-8 SHORTED)
- TURNS RATIO - ±3
 3-4:1-2 - 1:0.096
 3-4:5-6 - 1:0.03
 3-4:8-7 - 1:0.108
- DCR - OHMS TYP, TOL TBD
 3-4 - 4.1
 1-2 - 0.34
 5-6 - 0.02
 7-8 - 0.35
- HIPOT - 5500VAC 1SEC
N1,N2 TO N3,N4

NOTE:
MEETS CONSTRUCTION FOR:
UL 1310, 1950, 1411
IEC 61558-1, 2-17, EN60950

REVISION		DATE	MARKINGS	LOCATION
0	PRELIMINARY	01/21/00	CRAMER EIA DATE CODE CVP 10-016	PIN RAIL SIDE OF CORE
1	CHANGED PIN OUTS	02/22/00	DESCRIPTION 5 VA FLYBACK XFMR 3.3,12	TOLERANCE UNLESS OTHERWISE SPECIFIED 2 PLACE DECIMALS ±.010 3 PLACE DECIMALS ±.005 FRACTIONS ±1/64 ANGLES ±1/2°
			CUSTOMER CRAMER STANDARD	PROPRIETARY INFORMATION PROPERTY OF CRAMER COIL & TRANSFORMER CO. DUPLICATION AND/OR DISTRIBUTION BY PERMISSION ONLY
			G:\DATA\SPCS\ENG\CVP\10-016	CUSTOMER PART NUMBER
			DR. CAM	DATE 01/21/00
			APPD. JDB	DATE 01/21/00
				CRAMER PART NUMBER CVP 10-016
				REV 1

1

2

3

4

5

6