

1

2

3

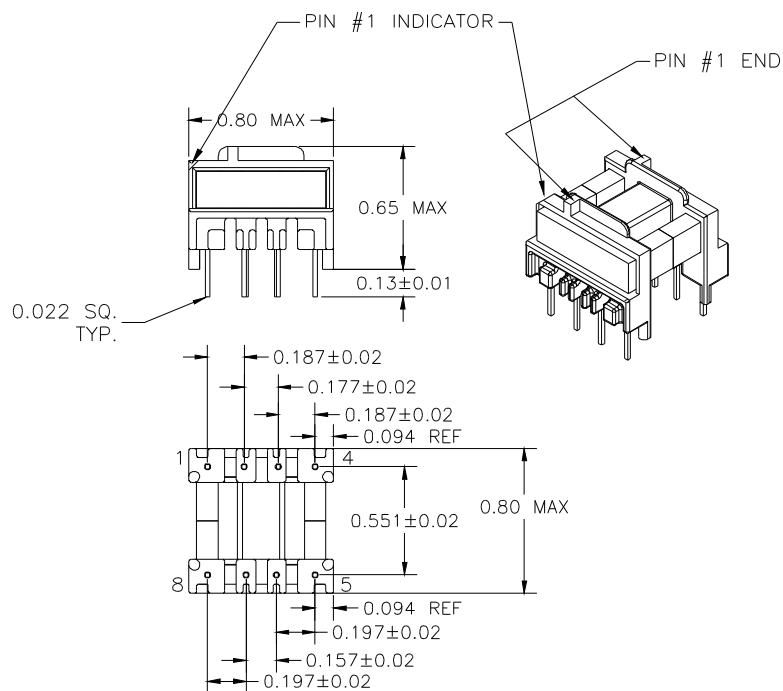
4

5

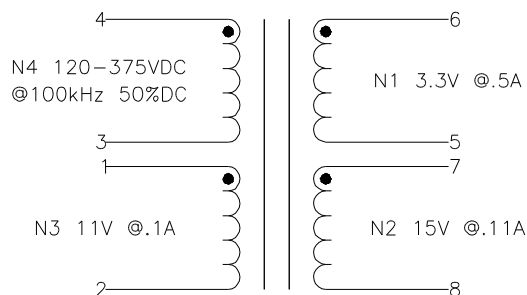
6

A

A



FOR USE WITH
STMicroelectronics
VIPer 20
SECONDARY REGULATION



NOTE:
POLARITY SHOWN IS THE TRANSFORMER.
FOR CORRECT FLYBACK OPERATION
CONNECT B+ TO PIN 3.

ELECTRICAL SPECIFICATIONS

L @ 1kHz .1V - (3-4) 2.8mH ±10

LL @ 100kHz .1V - (3-4) 31µH TYP, TOL TBD
(WITH 1,2,5-8 SHORTED)

URNS RATIO - ±3

3-4:1-2 - 1:0.096

3-4:5-6 - 1:0.03

3-4:8-7 - 1:0.132

DCR - OHMS TYP, TOL TBD

3-4 - 4.1

1-2 - 0.34

5-6 - 0.02

7-8 - 0.42

HIPOT - 5500VAC 1SEC

N1,N2 TO N3,N4

NOTE:
MEETS CONSTRUCTION FOR:
UL 1310, 1950, 1411
IEC 61558-1, 2-17, EN60950

E

E

F

F

G

G

H

H

REVISION		DATE	MARKINGS	LOCATION
0	PRELIMINARY	01/21/00	CRAMER EIA DATE CODE CVP 10-017	PIN RAIL SIDE OF CORE
1	CHANGED PIN OUTS	02/22/00	DESCRIPTION 5 VA FLYBACK XFMR 3.3, 15	TOLERANCE UNLESS OTHERWISE SPECIFIED 2 PLACE DECIMALS ±.010 3 PLACE DECIMALS ±.005 FRACTIONS ±1/64 ANGLES ±1/2°
			CUSTOMER CRAMER STANDARD	PROPRIETARY INFORMATION PROPERTY OF CRAMER COIL & TRANSFORMER CO. DUPLICATION AND/OR DISTRIBUTION BY PERMISSION ONLY
			G:\DATA\SPCS\ENG\CVP\10-017	CUSTOMER PART NUMBER
			DR. CAM	DATE 01/21/00
			APPD. JDB	DATE 01/21/00
				CRAMER PART NUMBER CVP 10-017
				REV 1

1

2

3

4

5

6

J

J