

1 2 3 4 5 6

A

A

B

B

C

C

D

D

E

E

F

F

G

G

H

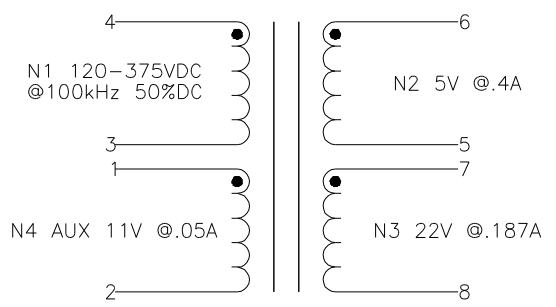
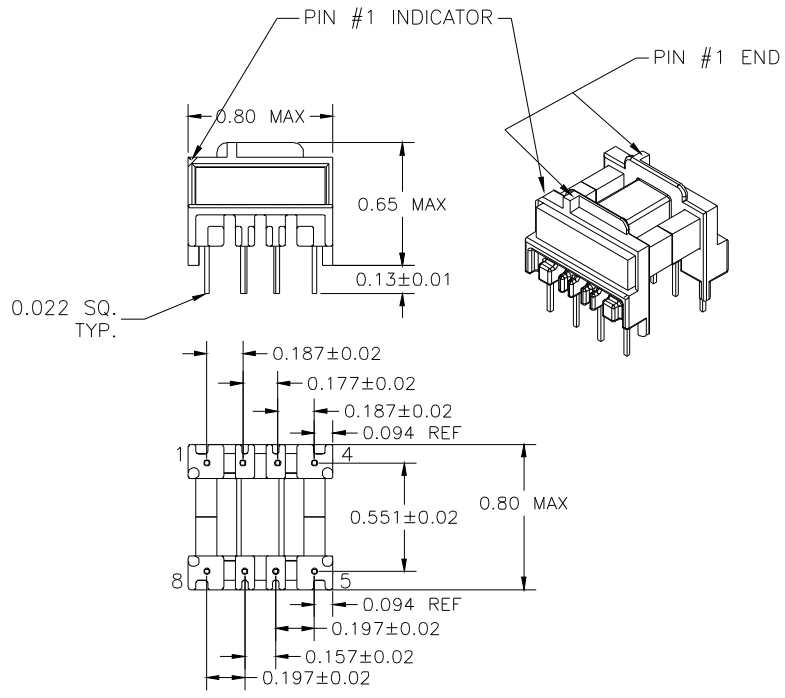
H

I

I

J

J



ELECTRICAL SPECIFICATIONS

L @ 1kHz .1V (3-4) 1.25mH ±10%

LL @ 100kHz .1V (3-4) 22µH TYP, TOL TBD
 (WITH 1,2,5-8 SHORTED)

URNS RATIO - ±3%

4-3:1-2 - 1:0.134
 4-3:6-5 - 1:0.063
 4-3:7-8 - 1:0.232

DCR - OHMS TYP, TOL TBD

N1 - 3.90
 N2 - 0.045
 N3 - 0.674
 N4 - 0.168

HIPOT - 2500VAC 1SEC
 1-4 TO 5-8

| | | | | |
|------------------------------|----------|---|----------------------------------|--|
| REVISION | | DATE | MARKINGS | LOCATION |
| A | RELEASED | 03/13/00 | CRAMER (DATE CODE) CVP 10-021 | PIN RAIL SIDE OF CORE |
| DESCRIPTION | | TOLERANCE UNLESS OTHERWISE SPECIFIED 2 PLACE DECIMALS ±.010 3 PLACE DECIMALS ±.005 FRACTIONS ±1/64 ANGLES ±1/2° | | PROPRIETARY INFORMATION PROPERTY OF CRAMER COIL & TRANSFORMER CO. DUPLICATION AND/OR DISTRIBUTION BY PERMISSION ONLY |
| CUSTOMER | | | | |
| DIGITAL APPLIANCE | | | | |
| G:\DATA\SPECS\ENG\CVP\10-021 | | CUSTOMER PART NUMBER | | REV |
| DR. | CAM | DATE | CRAMER PART NUMBER | |
| APPD. | JDB | 03/13/00 | CVP 10-021 | |
| | | 03/14/00 | REV A | |

1 2 3 4 5 6