

1 2 3 4 5 6

A

B

C

D

E

F

G

H

I

J

A

B

C

D

E

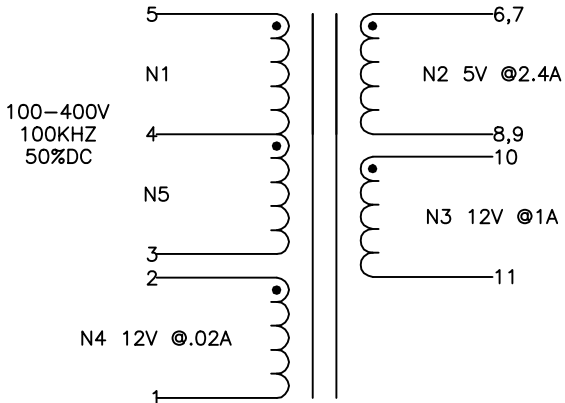
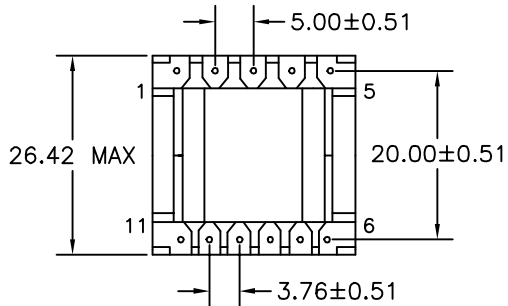
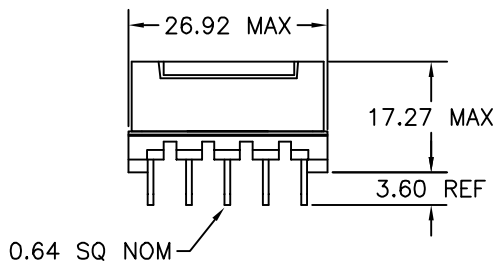
F

G

H

I

J



NOTE:
POLARITY SHOWN IS FOR THE
TRANSFORMER. FOR CORRECT
FLYBACK OPERATION CONNECT
B+ TO PIN 3.

ELECTRICAL SPECIFICATIONS

L @ 1kHz 10mA - (5-3) 1.10mH ±10%
 LL @ 100kHz 10mA - (5-3) 8.7µH TYP, TOL TBD
 (WITH 1,2,6-11 SHORTED)
 TURNS RATIO - ±3%
 N1/N5:N2 - 1:0.045
 N1/N5:N3 - 1:0.106
 N1/N5:N4 - 1:0.106
 DCR - OHMS TYP, TOL TBD
 N1/N5 - 0.904
 N2 - 0.008
 N3 - 0.031
 N4 - 0.099
 HIPOT - 4000VAC 1SEC
 N1,N4,N5 TO N2,N3

NOTE:
MEETS CONSTRUCTION FOR:
UL 1310, 1950, 1411
EN60950

REVISION		DATE	MARKINGS	LOCATION	
			CRAMER DATE CODE CVP 53-002	PIN RAIL SIDE OF CORE	
O	PRELIMINARY	05/09/03			
A	RELEASED	05/19/03	DESCRIPTION	TOLERANCE UNLESS OTHERWISE SPECIFIED	PROPRIETARY INFORMATION
B	PIN SIZE WAS 0.031 DIA NOM	05/22/03	VIPER 53 FLYBACK TRANSFORMER 5,12	2 PLACE DECIMALS ±.010 3 PLACE DECIMALS ±.005 FRACTIONS ±1/64 ANGLES ±1/2°	PROPERTY OF CRAMER COIL & TRANSFORMER CO. DUPLICATION AND/OR DISTRIBUTION BY PERMISSION ONLY
C	UPDATED PIN TO PIN & ROW TO ROW DIMENSIONS	07/01/03	CUSTOMER		
D	INSERTED TOOLED BOBBIN	03/07/05			
			G:\DATA\SPECS\ENG\CVP\53-002	CUSTOMER PART NUMBER	REV
			DR. NJW	DATE 05/09/03	
			APPD. JDB	DATE 05/19/03	
				CRAMER PART NUMBER CVP 53-002	REV D

1 2 3 4 5 6