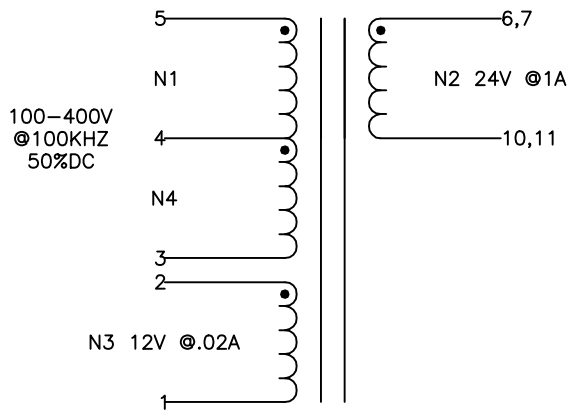
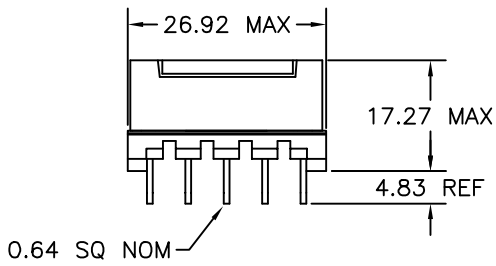


1 2 3 4 5 6

A

A

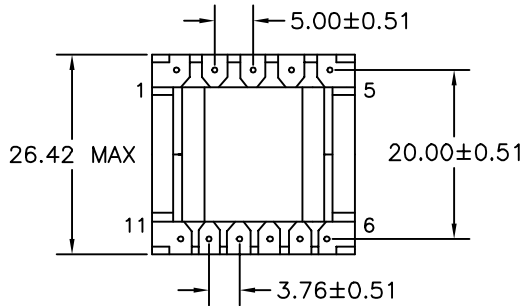


B

B

C

C



NOTE:  
POLARITY SHOWN IS FOR THE  
TRANSFORMER. FOR CORRECT  
FLYBACK OPERATION CONNECT  
B+ TO PIN 3.

D

D

E

E

ELECTRICAL SPECIFICATIONS

L @ 1kHz 10mA - (5-3) 1.10mH ±10%

LL @ 100kHz 10mA - (5-3) 4.4µH TYP, TOL TBD  
(WITH 1,2,6-11 SHORTED)

URNS RATIO - ±3%  
N1/N4:N2 - 1:0.227  
N1/N4:N3 - 1:0.121

DCR - OHMS TYP, TOL TBD  
N1/N4 - 0.897  
N2 - 0.064  
N3 - 0.113

HIPOT - 4000VAC 1SEC  
N1,N3,N4 TO N2

NOTE:  
MEETS CONSTRUCTION FOR:  
UL 1310, 1950, 1411  
EN60950

F

F

G

G

H

H

REVISION		DATE	MARKINGS	LOCATION
O	PRELIMINARY	05/13/03	CRAMER DATE CODE CVP 53-005	PIN RAIL SIDE OF CORE
A	RELEASED	05/19/03	DESCRIPTION 24V 1A VIPER 53 FLYBACK XFMR	TOLERANCE UNLESS OTHERWISE SPECIFIED 2 PLACE DECIMALS ±.010 3 PLACE DECIMALS ±.005 FRACTIONS ±1/64 ANGLES ±1/2°
B	PIN SIZE WAS 0.031 DIA NOM	05/22/03	CUSTOMER	
C	UPDATED PIN TO PIN & ROW TO ROW DIMENSIONS	07/01/03		
D	CONVERTED DIMENSIONS TO METRIC	12/12/03		
E	INSERTED TOOLED BOBBIN	09/19/05	G:\DATA\SPECS\ENG\CVP\53-005	CUSTOMER PART NUMBER
			DR. NJW	REV
			DATE 05/13/03	CRAMER PART NUMBER
			APPD. JDB	CVP 53-005
			DATE 05/19/03	REV E

1 2 3 4 5 6

J

J