

1 2 3 4 5 6

A

B

C

D

E

F

G

H

I

J

A

B

C

D

E

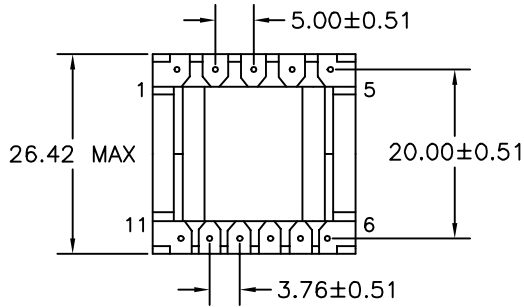
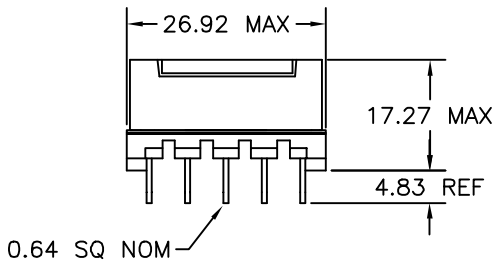
F

G

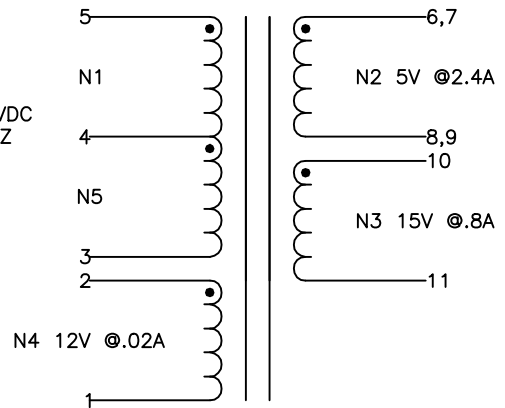
H

I

J



100-400VDC
@ 100KHZ
50% DC



NOTE:
POLARITY SHOWN IS FOR THE
TRANSFORMER. FOR CORRECT
FLYBACK OPERATION CONNECT
B+ TO PIN 3.

ELECTRICAL SPECIFICATIONS

L @ 1kHz 10mA - (5-3) 1.10mH ±10%

LL @ 100kHz 10mA - (5-3) 8.1µH TYP, TOL TBD
(WITH 1,2,6-11 SHORTED)

URNS RATIO - ±3%
N1/N5:N2 - 1:0.045
N1/N5:N3 - 1:0.136
N1/N5:N4 - 1:0.106

DDCR - OHMS TYP, TOL TBD
N1/N5 - 0.912
N2 - 0.008
N3 - 0.041
N4 - 0.100

HIPOT - 4000VAC 1SEC
N1,N4,N5 TO N2,N3

NOTE:
MEETS CONSTRUCTION FOR:
UL 1310, 1950, 1411
EN60950

REVISION		DATE	MARKINGS CRAMER DATE CODE CVP 53-006	LOCATION PIN RAIL SIDE OF CORE	
O	PRELIMINARY	05/14/03			
A	RELEASED	05/19/03	DESCRIPTION VIPER 53 FLYBACK XFMR 5,15	TOLERANCE UNLESS OTHERWISE SPECIFIED 2 PLACE DECIMALS ±.010 3 PLACE DECIMALS ±.005 FRACTIONS ±1/64 ANGLES ±1/2°	PROPRIETARY INFORMATION PROPERTY OF CRAMER COIL & TRANSFORMER CO. DUPLICATION AND/OR DISTRIBUTION BY PERMISSION ONLY
B	PIN SIZE WAS 0.031 DIA NOM	05/22/03	CUSTOMER		
C	UPDATED PIN TO PIN & ROW TO ROW DIMENSIONS	07/01/03			
D	INSERTED TOOLED BOBBIN	09/19/05			
			G:\DATA\SPECS\ENG\CVP\53-006	CUSTOMER PART NUMBER	REV
			DR. MEC	DATE 05/14/03	CRAMER PART NUMBER CVP 53-006
			APPD. JDB	DATE 05/19/03	

1 2 3 4 5 6