

1

2

3

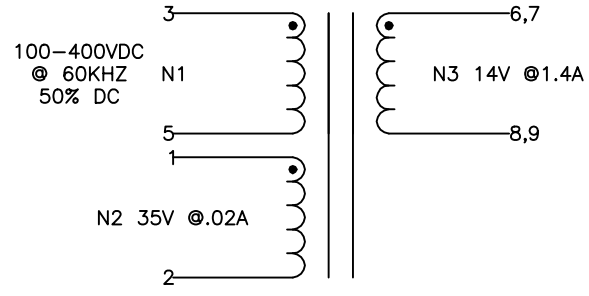
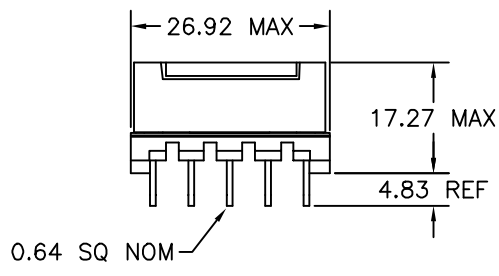
4

5

6

A

A

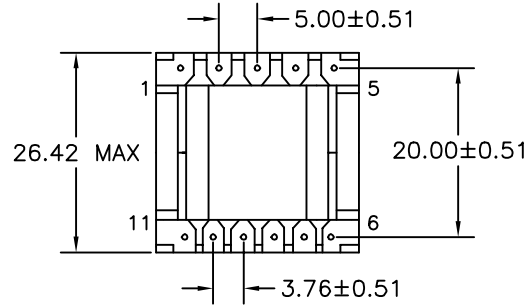


B

B

C

C



NOTE:
POLARITY SHOWN IS FOR THE
TRANSFORMER. FOR CORRECT
FLYBACK OPERATION, CONNECT
B+ TO PIN 5.

D

D

E

E

ELECTRICAL SPECIFICATIONS

L @ 1kHz 10mA - (3-5) 729µH ±10%

LL @ 100kHz 10mA - (3-5) 6.8µH TYP, TOL TBD
(WITH 1,2,6-9 SHORTED)

URNS RATIO - ±3%
N1:N2 - 1:0.389
N1:N3 - 1:0.167

DCR - OHMS TYP, TOL TBD
N1 - 0.694
N2 - 0.295
N3 - 0.024

HIPOT - 4000VAC 1SEC
N1,N2 TO N3

F

F

G

G

H

H

REVISION		DATE	MARKINGS	LOCATION
A	RELEASED	07/15/05	CRAMER DATE CODE CVP 53-022	PIN RAIL SIDE OF CORE
B	REVERSED N2 POLARITY	08/08/05	DESCRIPTION 20VA LED DRIVER FLYBACK	TOLERANCE UNLESS OTHERWISE SPECIFIED 2 PLACE DECIMALS ±.010 3 PLACE DECIMALS ±.005 FRACTIONS ±1/64 ANGLES ±1/2° PROPRIETARY INFORMATION PROPERTY OF CRAMER COIL & TRANSFORMER CO. DUPLICATION AND/OR DISTRIBUTION BY PERMISSION ONLY
			CUSTOMER	
			G:\DATA\SPECS\ENG\CVP\53-022	CUSTOMER PART NUMBER
			DR. MEC	DATE 07/15/05
			APPD. JDB	DATE 07/19/05
				CRAMER PART NUMBER CVP 53-022
				REV B

I

I

J

J

1

2

3

4

5

6