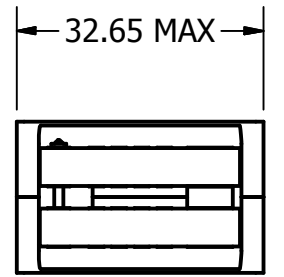
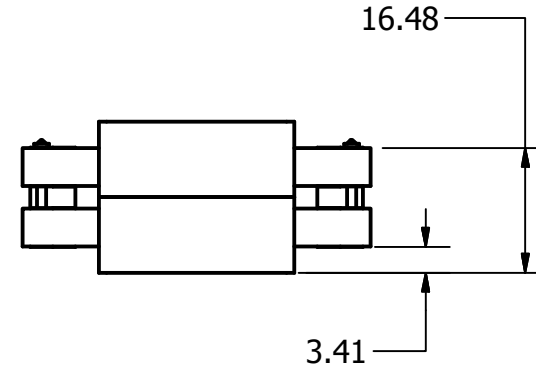
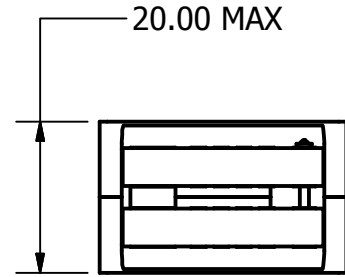
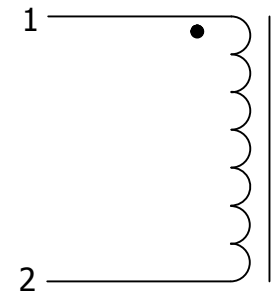
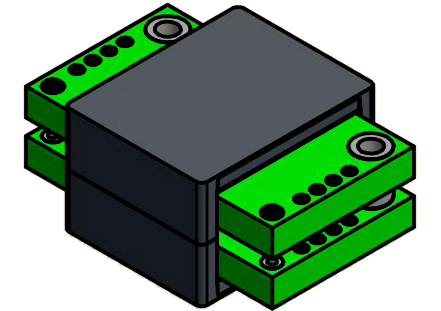
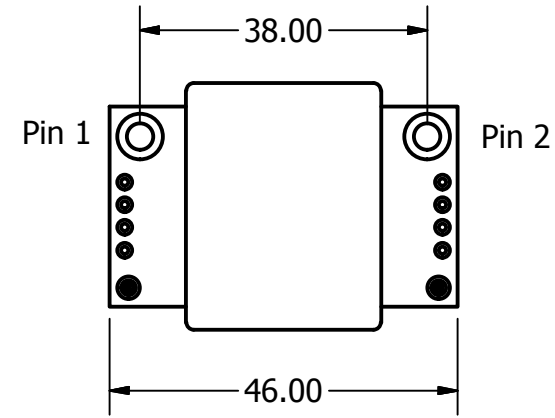
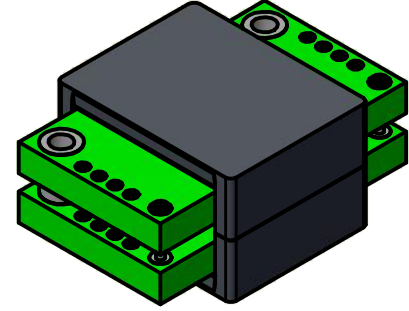


Item	Parameter	Details
1	Topology	Buck, Boost, Coupled-Inductors
2	Frequency	Up to 3MHz
3	Ampere - Turns	Up to 240
4	Winding Current	110A Max
5	Isolation	4kVrms
6	Ambient Temp	-40C to +85C
7	Core Details	ER32



"Custom terminations and windings supported"

All dimensions are in mm.

DRAWN		<b>Cramer Magnetics</b>		
CHECKED				
QA		TITLE		
MFG		<b>Planar Inductor Series</b>		
APPROVED		SIZE	DWG NO	REV
		<b>B</b>	<b>CPL 3225 Platform</b>	
		SCALE	SHEET 1 OF 1	