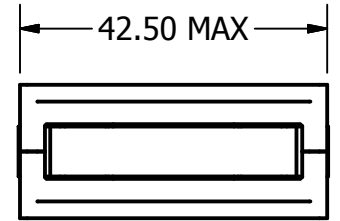
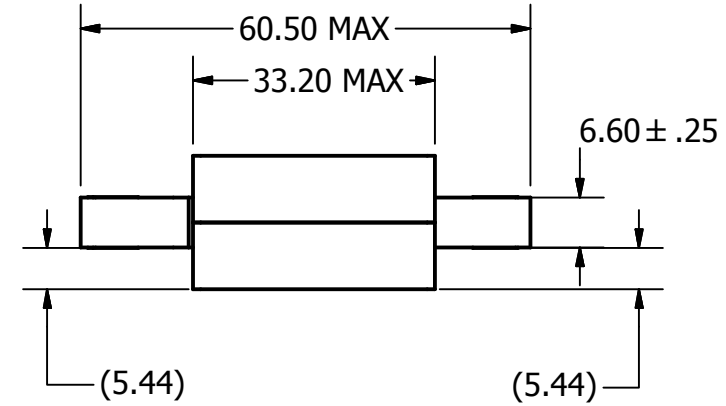
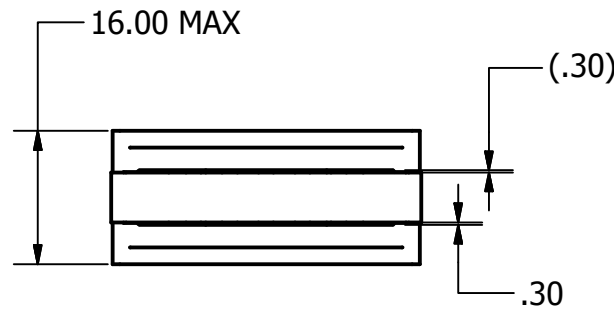
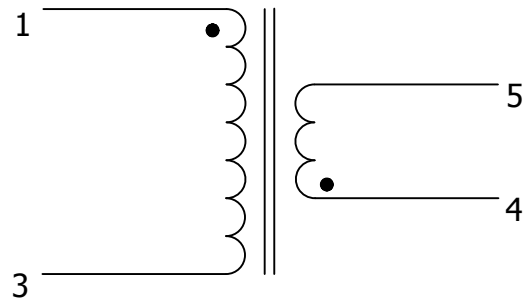
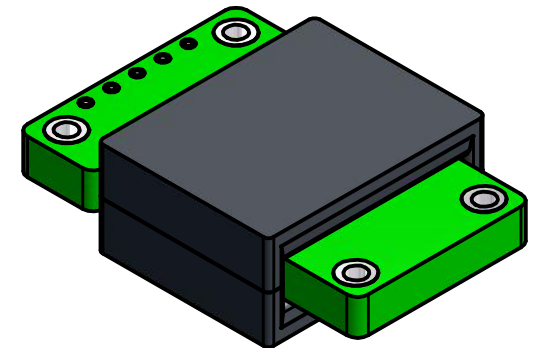
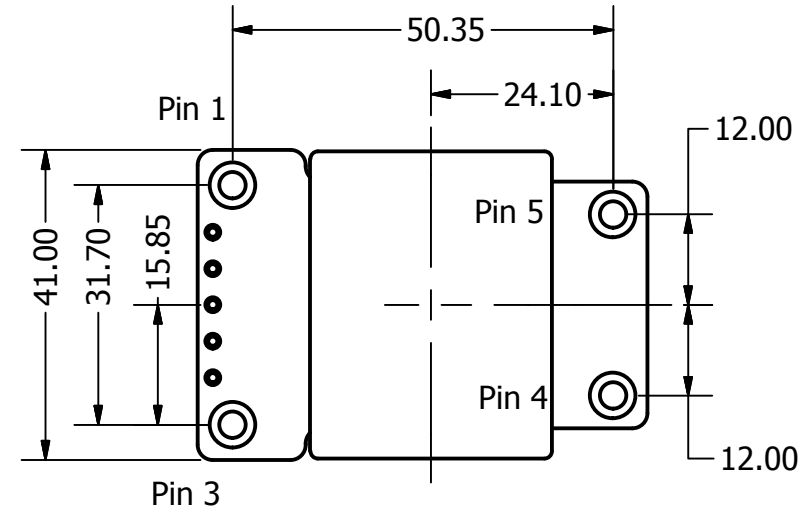
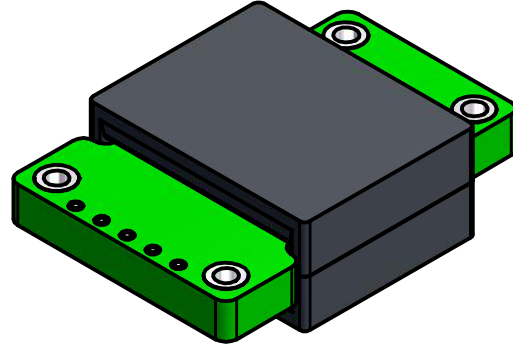


Item	Parameter	Details
1	Topologies	Flyback, Forward, Push-Pull, Half Bridge, Full Bridge, Resonant
2	Power	up to 2.5kW
3	Frequency	20kHz to 3MHz
4	Winding Voltage	750V max
5	Turns Ratio	Custom
6	Winding Current	200A max
7	Isolation	up to 4kVrms
8	Ambient Temp	-40C to +85C
9	Core Details	ER41



"Custom terminations and windings supported"

All dimensions are in mm.

DRAWN		Cramer Magnetics		
CHECKED				
QA		TITLE		
MFG		Planar Transformer Series		
APPROVED		SIZE	DWG NO	REV
		B	CPL 4132 Platform	
		SCALE	SHEET 1 OF 1	